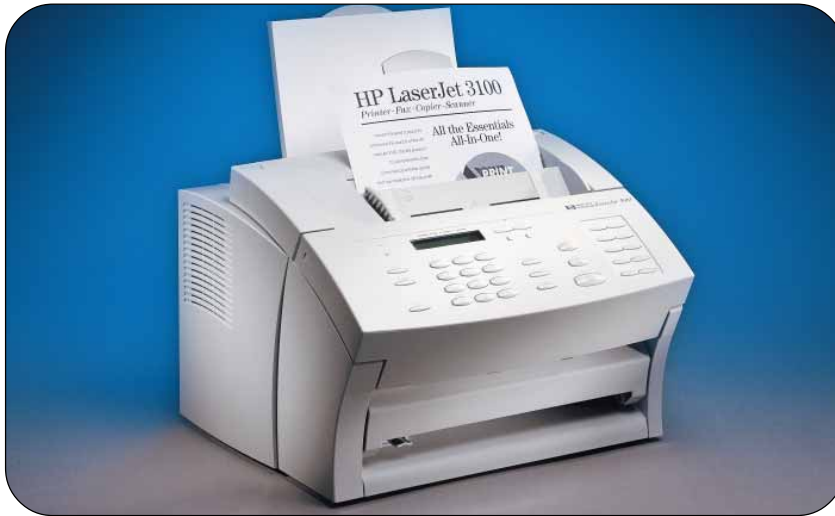


# The HP LaserJet 3100 Printer•Fax•Copier•Scanner

## Technical Data



The HP LaserJet 3100 is a versatile business tool that delivers convenient printing, faxing, copying and scanning capabilities in a single device, and enables you to communicate more effectively with customers and clients. Powerful software provides simple access to HP LaserJet 3100 features and increases productivity by letting you manage documents with ease. Best of all, the HP LaserJet 3100 delivers the quality and reliability you've come to expect from Hewlett-Packard.

### **Fast, Professional HP LaserJet Print Quality**

High-quality laser printing with true 600 x 600 dpi resolution makes all your important documents look their professional best, no matter what media you're printing on—labels, card stock, specialty papers, transparencies, envelopes and more. Quality document scanning at 600 dpi enhanced with 256 levels

of gray ensures that scanned documents are legible and crisp on screen.

No warmup time means documents print, scan or copy quickly—up to six pages per minute. You can also fax documents at six seconds per page for fast completion of important tasks. The HP LaserJet 3100 even lets you accomplish multiple tasks simultaneously, like printing while receiving or sending faxes, receiving faxes while copying or scanning, and more.

### **Do More at Your Desktop; Print-Fax-Copy-Scan**

The HP LaserJet 3100 comes with 2 Mbytes (150 pages) of fax memory and works as a stand-alone fax machine or copier, even without a PC or with your PC turned off. You get clear copies of text and graphics with 600-dpi interpolation and photo mode.

## **All the essentials, all in one.**

The HP LaserJet 3100 scans faxes quickly and transmits from memory so you can send multiple faxes without waiting. Incoming faxes are stored in memory and print automatically once the printer is free.

You can use the included PC fax software to send faxes electronically from your PC, or have the HP LaserJet 3100 route incoming faxes to your desktop.

Additionally, the HP LaserJet 3100 saves you time with professional Optical Character Recognition (OCR) software, which lets you scan documents into your word processing application without having to retype the entire document.

### **The HP Reliability That Business Demands**

The HP LaserJet 3100 is easy to set up and even easier to use—one simple software installation and you've got quick access to powerful features via the front panel or through the intuitive graphical interface on your desktop. The HP LaserJet 3100 is compatible with Microsoft® Windows® 3.1x, Windows® 95 and Windows® NT 4.0 and is backed by HP's industry-leading reputation for reliability, plus a one-year warranty with HP's Express Exchange and Custom Care Support Program.



# The Versatile, All-in-One Business Tool

## Printer

### Exceptional Speed and Print Quality

- Professional laser printing with true 600 x 600 dpi resolution
- Jobs finish quickly with a fast 6-pages-per-minute print engine
- Multitasks easily—lets you print documents, even while sending or receiving faxes
- Create print documents as small as 3 x 5 inch cards and as large as legal size
- Flexible media handling—prints on plain and specialty papers, labels, envelopes, transparencies, card stock and postcards
- Input and output trays handle up to 100 pages

## Fax and PC Fax

### Professional Fax and PC Fax Functionality

- Works as a standalone fax—even without a PC
- 2 Mbytes (150 pages) of fax memory enables true multitasking—sends and receives faxes while printing, receives faxes while copying or scanning
- Fast faxing at 6 seconds per page with 14.4 Kbps modem
- 30-page automatic document feeder
- Stores incoming faxes in memory while you are away from the office for remote retrieval
- Stores up to 175 speed-dials and 25 group lists for efficient faxing
- PC fax software is fully integrated with device—compose and send faxes right from your computer, or have incoming faxes automatically routed to your desktop

### Document Assistant

Using the HP LaserJet 3100 for all your demanding business needs couldn't be easier. Whenever you place a document in the device's automatic document feeder (ADF), a dialog box will pop up on your screen. From here, you have one-button access to user interfaces for scanning, PC faxing and copying features.

### Scan to E-mail

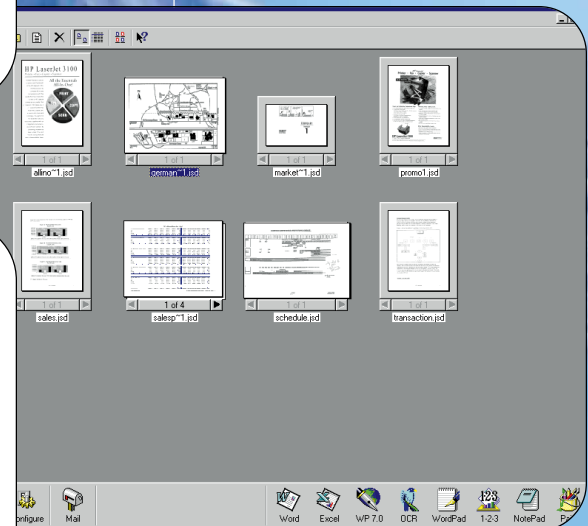
Easily scan and distribute documents using your supported e-mail application. Simply click the Scan to E-mail icon. Documents are scanned and routed to your e-mail inbox as portable documents. You can then e-mail the portable document to other users running Windows 3.1x, Windows 95 or Windows NT.

### JetSuite™ Pro Desktop

When you scan a document, HP LaserJet 3100 software converts it into an image and then sends the document icon to the JetSuite Pro desktop. You can then drag-and-drop the icon into supported applications like Microsoft Word™ or WordPerfect™. The application automatically launches, allowing you to immediately begin editing or annotating the scanned document. You can also drag-and-drop the icon to buttons on the toolbar which allow you to print, fax or copy your document.

## Powerful, Easy-to-Use Software Quickly Puts You in Command

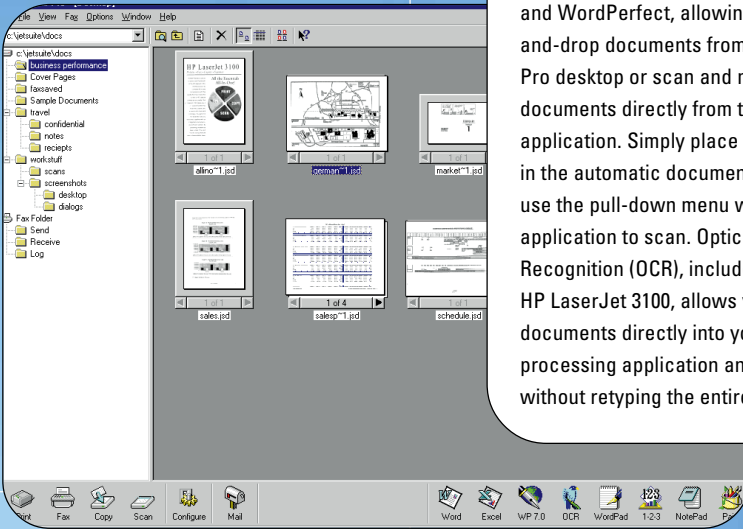
### JetSuite Document Assistant



## Copier

### Link to Applications

When you install the HP LaserJet 3100, intelligent software automatically establishes links to your key office suite applications such as Microsoft Word and WordPerfect, allowing you to drag-and-drop documents from the JetSuite Pro desktop or scan and manage documents directly from the supported application. Simply place the document in the automatic document feeder, then use the pull-down menu within the application to scan. Optical Character Recognition (OCR), included with the HP LaserJet 3100, allows you to scan documents directly into your word processing application and edit them without retyping the entire document.



### Make Convenience Copies Quickly and Easily

- Works as a standalone copier—even without a PC
- Multitasks easily—lets you create copies, even while receiving faxes
- Laser-quality copies up to 6-pages-per-minute with automatic collation
- Clear copies of text and images with 600-dpi interpolation and photo mode
- Makes from 1 to 99 copies at the touch of a button with reduction/enlargement

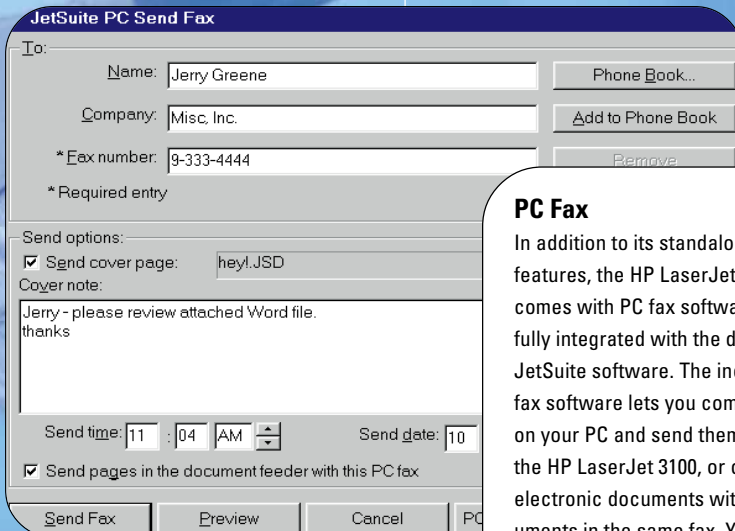
## Scanner

### Edit, Manage and Distribute Documents More Efficiently

- Scans documents quickly—up to 6 pages per minute
- Optical Character Recognition (OCR) software lets you scan text documents directly into your word processing application without retyping the entire document
- Scan originals from business cards to legal-size documents, up to 69 lbs
- Scan documents into e-mail for easy distribution
- JetSuite Pro desktop lets you view documents in thumbnail format or expand them to full-screen size for easy editing and annotation

### PC Fax

In addition to its standalone fax features, the HP LaserJet 3100 also comes with PC fax software that is fully integrated with the desktop and JetSuite software. The included PC fax software lets you compose faxes on your PC and send them through the HP LaserJet 3100, or combine electronic documents with paper documents in the same fax. You can also route incoming faxes to your desktop.



## Technical Specifications

HP LaserJet 3100 Printer•Fax•Copier•Scanner	
<b>PRINT METHOD</b>	
<b>Engine Speed and Processor</b>	6 ppm-rated engine speed; instant-on fuser eliminates warmup time; Motorola 68020 25.6-MHz processor
<b>Resolution</b>	600 x 600 dpi
<b>Printer Language</b>	Host-based printing with PCL 4 MS-DOS® emulation
<b>Paper Handling</b>	One 100-sheet paper input bin with single-sheet priority feed slot; one 100-sheet paper output bin with alternate straight-through path for wrinkle-free envelope printing
<b>Media Types</b>	Paper, envelopes, transparencies, card stock, postcards and labels
<b>Standard Media Sizes</b>	Paper: letter, legal, A4, 3 x 5 in (76 x 127 mm) Envelope: executive, Com-10, monarch, C5, DL, B5 and custom sizes
<b>Paper Weights</b>	16 to 28 lb (60 to 105 g/m <sup>2</sup> ) using paper output bin; 16 to 42 lb (60 to 157 g/m <sup>2</sup> ) using front output slot
<b>Printable Area</b>	Left/right margin: 0.25 in (6.3 mm) Top/bottom margin: 0.20 in (5.08 mm)
<b>FAX COMPATIBILITY</b>	ITU Group 3, Error Correction Mode (ECM), MH/MR/MMR/JBIG compression
<b>Transmission Speed</b>	6 seconds per page†
<b>Modem Speed</b>	14400/12000/9600/7200/4800/2400 bps
<b>Quick Dialing</b>	175 programmable speed-dials and 25 group distribution lists, 10 one-touch front panel keys
<b>Resolution</b>	Standard 203 x 98 dpi, Fine 203 x 196 dpi, Superfine 300 x 300 dpi, Photo Mode 300 x 300 (halftone-enabled)
<b>Document Tray Capacity</b>	Up to 30 sheets (20-lb paper)
<b>Document Feeder Media Requirements</b>	12 to 69 lb (42 to 260 g/m <sup>2</sup> ); feeds paper, card stock, transparencies, photos, labels, carrier sheets and more
<b>Fax Paper Sizes</b>	A4/letter/legal/long page length mode
<b>Additional Features</b>	Automatic fax/answering machine switching, distinctive ring detect (U.S. only), fax forwarding, memory receive, remote retrieval, delayed fax send, auto redial, fax reporting, broadcasting
<b>Memory</b>	Up to 150 pages fax storage†
<b>PC FAX COMPATIBILITY</b>	Class1/Class2
<b>COPIER SPEED</b>	6 pages per minute
<b>Multiple Copies</b>	1-99 with automatic collation
<b>Resolution</b>	Photo Mode: 300 dpi (halftone-enabled) Text Mode: 600 dpi interpolated with smoothing
<b>Reduction/Enlargement</b>	Reduce to 50%; enlarge to 200%
<b>SCANNER COMPATIBILITY</b>	TWAIN 1.6
<b>Resolution</b>	600 dpi enhanced (300 dpi optical) with 256 levels of gray
<b>Speed</b>	Up to 6 pages per minute**
<b>Scannable Area</b>	Min: 2 x 3.5 in (51 x 89 mm) Max: 8.5 x 39 in (216 x 991 mm)
<b>GENERAL</b>	
<b>Software:</b>	Includes drivers for Print, PC Fax and Scan, integrated PC Fax software, integrated desktop organizing scan and PC fax documents, drag-and-drop links to key applications, scanner editor, self-viewing portable document creation, easy access to device configuration, one-step scan, scan to e-mail, PC fax, copy functions and ReadIRIS professional OCR software
<b>JetSuite Pro for the HP LaserJet 3100 Printer•Fax•Copier•Scanner</b>	
<b>Duty Cycle Monthly Volume</b>	Up to 6,000 pages per month
<b>Toner</b>	Microfine toner; 2,500 pages (with 5% coverage)
<b>Cable (included in box)</b>	2 m HP LaserJet parallel cable (IEEE 1284-compliant); DB-25 to small 36-pin high-density male
<b>Operating &amp; Environmental Ranges</b>	Acoustics (ISO 9296): 5.7 Bels (L <sub>WAD</sub> ) sound power Operating Temperature: 15°C to 32.5°C (59°F to 90.5°F) Relative Operating Humidity: 10% to 80% (no condensation)
<b>Power Requirements</b>	100/127V AC, 50/60 Hz
<b>Minimum System Requirements when used through PC</b>	486 or higher with 16 Mbytes RAM, 30 Mbytes of free hard disk space, works with Windows 3.1, 3.11, Windows 95 or Windows NT 4.0, (NT 4.0 requires Pentium 90 and 16 to 32 Mbytes of RAM) CD-ROM recommended, dedicated IEEE 1284-compliant bidirectional parallel port
<b>Device Memory</b>	2 Mbytes memory (up to 150 pages fax storage)†
<b>Product Certifications</b>	UL/cUL listed; complies with IEC 825-1/EN 60825-1 and IEC 950/EN 60950; FCC Class B, FCC/port 68, CS-03; CISPR-22 class B; CDRH certified Class 1 Laser Product (safe for office/EDP use)
<b>Warranty</b>	One year with Express Exchange (US/Canada Only)

†Approximate figures. Exact speed will vary depending on the system configuration, software program and document complexity.  
\*Based on ITU-T test image #1 at standard resolution. More complicated pages or higher resolution will take longer and use more memory.  
\*\*Scan time only, data transfer time to CPU not included.

## Ordering Information

Number	Description
C4177A†	HP LaserJet 3100 xi Printer•Fax•Copier•Scanner Includes CardIRIS LE by IRIS
C4175A†	HP LaserJet 3100 se Printer•Fax•Copier•Scanner Includes Streetwise by Design Office Limited

## For More Information

Hewlett-Packard peripherals, personal computers, supplies and accessories are available at authorized HP resellers worldwide. Call for the authorized HP reseller nearest you:

United States: (800) LASERJET (527-3753)  
Canada: (800) 387-3867

Hewlett-Packard provides a number of sources for more information on HP printers and accessories:

- The HP Customer Support Center provides fast assistance by telephone: (208) 323-2551. (Available Monday - Friday 6:00 am to 10:00 pm and Saturday 9:00 am to 4:00 pm Mountain time.)
- The HP Peripherals Forum on CompuServe ("GO HP") puts you in contact with other HP printer users who may be able to provide online responses to technical questions.
- Information about the HP LaserJet 3100 is also available on theWorld Wide Web: [www.hp.com/support/lj3100](http://www.hp.com/support/lj3100)

† Availability outside the U. S. may vary.

Microsoft, Windows and MS-DOS are U.S. registered trademarks of Microsoft Corporation. JetSuite Pro is a trademark of JetFax Inc. Energy Star is a U.S. registered service mark of the United States Environmental Protection Agency. All other brand and product names are trademarks or registered trademarks of their respective companies.

The information in this document is subject to change without notice.

As an Energy Star partner, HP has determined that this product meets the Energy Star guidelines for energy efficiency.



Printed in USA on recycled paper 1/98  
© Hewlett-Packard Company 1998  
5966-0937EUS

